



The Eagle Newsletter



July 2020

Eastern Nebraska Veterans' Home, 12505 S. 40th Street, Bellevue NE 68123 402-595-2180



Members, Responsible Parties, and/or designated family members

COVID-19 Update week of August 3-7, 2020

The calls are less but equally the agreement is that we are not out of the woods related to COVID-19. We tend to try and implement those ideas and suggestions to make them as practicable as possible within Eastern Nebraska Veterans' Home. May we stay vigilant in the protection of everyone involved?

Here we are in August. The air has a bit of fall when we would normally be hot and sticky. I'm sure we will climb back up in the Fahrenheit readings. Can I just say 2020 has been full of surprises? The East coast reeling from the latest hurricane. Sustained high winds and lots of rain have toppled many trees interrupting power.

We have not experienced the devastation that other facilities have endured. We have some visitation and the maintenance men's mowing interrupts the visits. We will work on that. In summary we are five months into the Pandemic and COVID-19 continues to plague our country and world alike.

Talks of vaccines and drugs developed around antibodies, but the cure and prevention continues to elude the medical and scientific community. End of the day it is about personal protection. The decision to do the right thing and practice good hand hygiene, wear a mask, and practice social distancing. It just may be our new normal for a while.

Continuation of the first wave, or a second wave arising? We literally do not know. Let our efforts not be in vain as we do the things required to maintain readiness. The facility did have our Infection control focused survey and had no deficiencies.

I wish I had something of quantitative value to provide an update this week. Hang in there. Keep your spirits elevated. If you're getting down look for a buddy to check up on. We all could use a lift me up. We are resolved to see this through and come out better people.

Thanks for all of your support. Stay healthy!

David Williamson

ENVH Administrator



Welcome to the Eastern Nebraska Veterans' Home



Admit Date

Name

July 1	Robert F.
July 8	Steven K.
July 14	John N.
July 23	Donald W.
July 27	Helga C.
July 27	Timothy C.
July 31	Lowell C.

Korean War Certificates



Certificate signed by Governor Pete Ricketts and ENVH Administrator, David Williamson



Honoring Korean War Veterans at a safe distance for all.

ENVH's Website:

Schedule a Window Visit

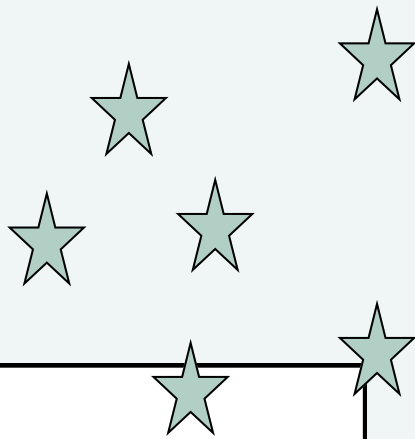
Above: This is what you will see after accessing ENVH's website. You can click on "Schedule a Window Visit" which takes you to the Sign Up Genius website. You can scroll to select the date and open time slot that you want. Then, click on "Submit and Sign Up" to complete the process of providing your contact information. Or you can call: Patti Howe at 402-591-4852. The visits are meaningful to the members!



Sign Up Genius: Family Window Visits

ENVH	9:00am - 9:30am	Family Member	Sign Up
------	-----------------	---------------	-------------------------

[Submit and Sign Up](#)



Member Spotlight

We are shining a spotlight on.....

**Thank you for your
service to the United
States of America**

**We are honored to
serve those who
served!**

- Ivar A.....Allegiance
- Dennis M.....Dedication
- Shirley W.....Motivation
- John W.....Service



MAIN DINING ROOM

Breakfast

Dedication: 7:00-7:30 AM

Designated members - Motivation/Service: 8:00-8:30 AM

Staff: 8:30-8:45 AM

Lunch

Dedication: 11:00-11:30 AM

Designated members - Motivation/Service: 12:00-12:30 PM Staff: 10:30-11:00 AM & 12:30-1:00 PM

Supper

Dedication: 4:30-5:00 PM

Designated members - Motivation/Service: 5:30-6:00 PM

Staff: 6:00-6:30PM

Designated Members by Unit Managers. Dedication must exit the dining room by the posted times



Family Council Corner:

This is a wonderful group of family members who meet at the Home on the **2nd Thursday** each month at **10:00 a.m.**

They discuss many issues concerning members and their families. They are a good support system for each other.

Meetings are on hold during this time

Please plan to join them and to see what it's all about.

Family Council President: Mrs. Jean Funkhouser

For more information, please contact Social Services by asking for Kari, Lynda or Paul

Ombudsman's Corner:

Ombudsmen are dedicated to enhancing the lives of long term care residents.

Ombudsmen:

- Advocate for residents' rights and quality care
- Educate consumers and providers
- Resolve residents' complaints
- Provide information to the public

ENVH's Ombudsman:

Pat Holstein

402-444-6536

Pen Pals Wanted



From:

Offutt Enlisted Spouses Club

To: Potential Pen Pals!

We are looking for friends, and hope you are too. Ten of our members are looking for pen pals. If you would like to exchange letters with members of the OESC, connect with us today!

To sign up, contact:

Patti Howe at 402-591-4852
Patti.howe@nebraska.gov or

Sarah Copeland at
offuttenlistedspousesclub@gmail.com

Offutt Enlisted Spouses Club is a private organization. It is not a part of the Department of Defense or any of its components and has no governmental status.



Veteran's Memorial Garden Brick Form Eastern Nebraska Veterans' Home

Now is the time to purchase your brick to be installed in the Veteran's Memorial Garden at the Eastern Nebraska Veterans' Home.

Bricks may be purchased in honor or memory of a loved one, the name of your organization or business, or you may simply want to thank a veteran!

You may purchase your brick donation using the form below for \$100. There are 14 characters on each line and there are 3 lines on each brick.



Name of person donating brick: _____

Email address: _____

Phone number: _____

Make checks payable to: **American Legion Benson Post 112/Memorial Brick Fund**

Please provide the exact wording you would like on the brick:

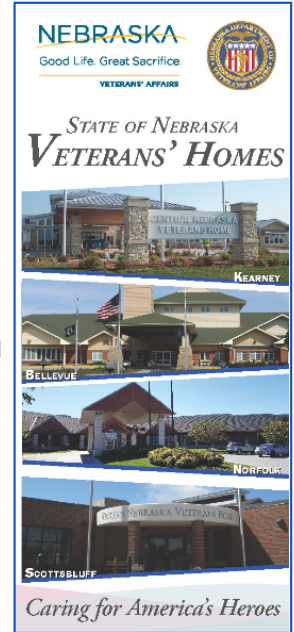
Bricks may be purchased by mailing a \$100 check or money order per engraved brick to:

Benson Post 112, American Legion, P.O. Box 4084, Omaha, NE 68104.

Contact Bruce Husted at 402-981-6820 with any questions.

What We Offer

- **Physical therapy (PT)** services are available to help improve a member's quality of life through examination, diagnosis, prognosis, physical intervention, and patient education. Each facility may offer a variety of different types of PT equipment and modalities to help promote mobility and function.
- **Occupational therapy (OT)** services are available to help members continue to participate in meaningful activities and functions through assessment and interventions, which may include adaptive equipment recommendations.
- **Speech Therapy** services are available to help evaluate, diagnose, and treat communication disorders (speech and language disorders), cognitive-communication disorders, voice disorders, and swallowing disorders.
- **Restorative Nursing Therapy** services are provided at all facilities with the focus on nursing interventions that promote the member's ability to adapt and adjust to living as independently and safely as possible. We actively focus on maintaining optimal physical, mental and psychosocial functioning.
- **Hospice/Palliative Care** for members facing the end of their life. Special care is provided to encourage comfort and preferences by an interdisciplinary team including medical professionals, social workers, clergy, hospice organizations, and trained volunteers. Being a part of the Nebraska Hospice – Veteran Partnership helps our facilities better provide end of life care to veterans and their families.
- **Memory Support Care Units** are dedicated to providing a safe, structured, and supportive environment for members. Our primary goal is to help our members achieve the best possible quality of life. The dementia program is an interdisciplinary team approach which enables the member to be involved in their daily life to the highest potential in a communal setting. This program provides opportunities for successful individual and group involvement based on their cognitive level of dementia. The program is tailored to the needs of the member relating to meals, ADLs, grooming, exercise, spiritual, cognitive, gender-specific activities, social interactions, music, walks, 1:1 interventions, small group interaction and rest. The members' prior lifestyles and occupations also influence the content of this program.



Eligibility and Admissions

Veterans who served on active duty in the armed forces of the United States may be eligible for admission to one of the Nebraska veterans homes; eligibility may extend to the spouse, surviving spouse, and Gold Star parent.

To apply for admittance into a state veterans' home, you may:

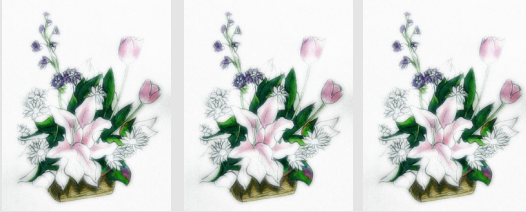
1. Apply to the home directly.
2. Apply through the County Veterans Service Officer (CVSO) in the county where you currently reside.
3. Apply through a recognized veterans organization:
 1. American Legion
 2. AMVETS
 3. DAV
 4. Marine Corps League
 5. Military Order of the Purple Heart
 6. Paralyzed Veterans of America
 7. Veterans of Foreign Wars of the United States
 8. Vietnam Veterans of America

Maintenance Charge is determined by a sliding scale depending on a person's income and or assets. Your contribution to the cost of care at the Home could be from \$0 to \$4,163.00 per month.

In
Loving
Memory
Of...



Matt N.



Chaplain's Corner

Chaplain

Dale Powell

Weekly Services are held in the Chapel

(All services within the Chapel are
on hold during this time)

However, we are conducting:

Mini-services within each Neighbor-
hood on Sunday mornings.
Please check the daily sheet for
dates and times.

It is so good to be back here at ENVH after being away for three months. I am impressed with how both the members and the staff are holding up with the restrictions and limitations that have come with Covid-19.

No one knows if and when we will “get back to normal”, whatever that may look like. Especially in the book of Psalms, God is often pictured as a Rock, a Refuge, a Fortress, a Stronghold—images of stability and security!

How wonderful to be able to trust in a God like that when our present circumstances are so unstable and uncertain!